



GRUPPOSTG  
**ENERGYGLASS®**  
SOLAR & GLASS ARCHITECTURE

## Rural building in Greve in Chianti

## Introduction

-

## PROJECT DATA

---

<b>Project type</b>	renovation
<b>Building use</b>	agricultural
<b>Heritage constraint</b>	conservation area
<b>Building address</b>	Via G. Pastore 3, Greve in Chianti (FI), Italy

## BIPV systems

### BIPV SYSTEM DATA

---

<b>Architectural system</b>	opaque roof
<b>Integration year</b>	2022
<b>Active material</b>	monocrystalline silicon
<b>Module transparency</b>	opaque
<b>Module technology</b>	glass-glass, hidden PV, standard and customized modules
<b>System power [kWp]</b>	15

### BIPV SYSTEM COSTS

---

## Stakeholders

### **BIPV system designer**

GruppoSTG Srl

### **BIPV system installer**

GruppoSTG Srl

Via P. Paleocapa 19, Bergamo (BG), Italy

+39 035-0510171

<https://www.gruppostg.com/it/>

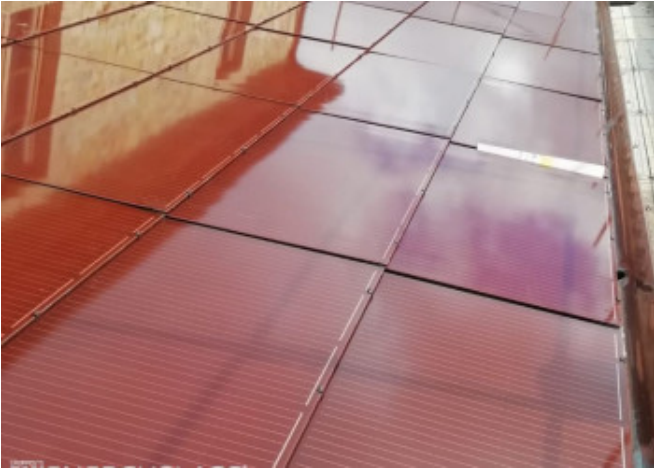
### **BIPV components producer**

GruppoSTG Srl

Via P. Paleocapa 19, Bergamo (BG), Italy

+39 035-0510171

<https://www.gruppostg.com/it/>



Case study author: