

About Tractile

Tractile is an innovative company which is dedicated to identifying and developing improved building systems and materials globally.

The company and its employees are acknowledged as pioneers and experts in the fields of:

- Building-Integrated Photovoltaic and Thermal (BIPV-T) Solar Systems
- Composite materials for the Building & Construction industry
- Product Development and Commercialisation
- Intellectual Property Management and Licensing

Based in Australia, we create partnerships nationally and internationally with progressive companies dedicated to delivering the future of building, now.

Our flagship product, Tractile, is the smart, designer roof. It provides a 4-in-1 combination of composite roof tile, electricity, hot water and insulation in an appealing, seamlessly integrated package.

Tractile's combination of patented interlocking tiles, high performance composite materials and solar technology, create sleek roofing solutions that offer superior design flexibility, durability, appeal and sustainability.

The multi award-winning Tractile Roof is designed in Australia and uses world-class technology and manufacturing processes to create our leading-edge roofing system.

For astute home builders, designers and developers wanting an innovative, sustainable solution, Tractile delivers street appeal combined with the income generating roof of the future.

However, Tractile is just one of our many exciting projects in our development pipeline, both domestically and internationally. Please contact us to be notified of our future projects and events, or to include Tractile in your next project.

Design

In simple terms, Tractile provides a 4-in-1 combination of roof tile, electricity, heated water, and insulation in a very architecturally appealing package. This is why we call it the Smarter Roof.

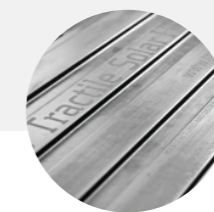
The Tractile Eclipse range is a modern interpretation of classic slate tiles. Compared with standard roof tiles, the double height halves the lineal metres of roof battens, and being approximately 8 times larger are faster to install. The lightly textured surface is clear of any screw fixings, provides a natural look and improves surface grip for safety. The low profile tile edge is 18mm.

Tractile is the new superior alternative to traditional roofing products.



SYSTEM & TECHNOLOGY

Worlds first integrated solar roof tile solution, generating both electricity and heated water from a single unit. Combines photovoltaic solar cells with thermal hot water in a common platform.



MATERIALS

Tractile Roof system is made of modern, lightweight composite materials. It uses a hook located on the underside of the tile, designed to interlock with the roof battens.



STYLE

Every now and then a product comes along that revolutionises an industry. When it comes to roofing, that product is Tractile.

Energy

The Roof Integrated Photovoltaic and Thermal (RIPV-T) system is an exciting new technology which merges photovoltaic (PV) and solar thermal hot water (STHW) systems, simultaneously providing both electricity and heated water.

Through this combination, more energy is generated per unit surface area when compared to separate photovoltaic panels and solar thermal collector's side-by-side.

Traditional PV systems turn an average of 10 to 20% of the sunlight into electricity. The remainder (80 to 90%) is lost as

heat. Also, as PV cells heat up in warm or hot conditions, their performance is reduced. Tractile overcomes these problems by using water to cool the PV cells and therefore producing heated water for use by the building occupants.

Excess electricity produced by the Tractile Solar System and not used by the home, can be stored in a battery or sold back to the energy grid.



Performance

A Tractile roof is engineered to withstand extreme weather conditions offering longevity with low maintenance. Responding to the threat of climate change a Tractile roof shields and protects the home and family.

QUALITY

Tractile provides an innovative combination of interlocking systems, high performance composite materials, and solar technology.

EFFICIENCY

In simple terms Tractile provides a 4-in-1 combination of Roof Tile, Electricity, Heated Water, and Insulation in a very architecturally appealing package.



Sustainability

Tractile offers a unique patented roofing solution that integrates high performance composite materials with solar photo voltaic-thermal technologies (RIPV-T) to meet the growing worldwide demand for sustainable and energy efficient solutions to building.



BAL40



CAT-5
CYCLONE PROOF



HAIL PROOF



DENT &
CORROSION PROOF



Clean Power with no
greenhouse emissions



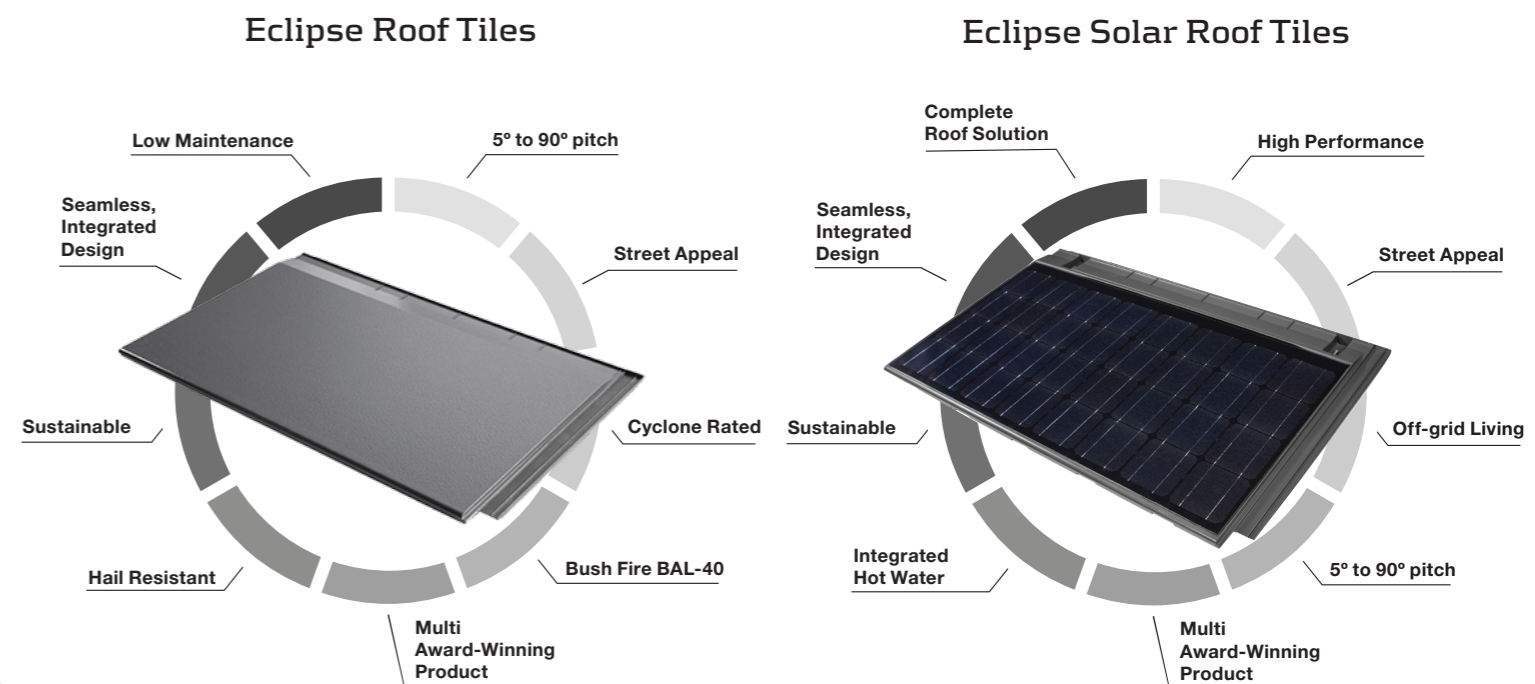
Reduce your running
costs & power bills



Minimal maintenance
required



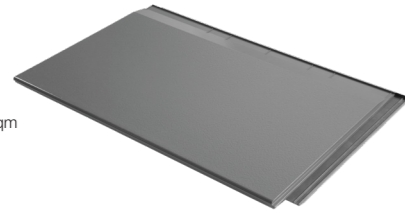
Very long lifespan



Tractile Roof Components

Eclipse Roof Tile

Dimensions Physical
1100 mm x 690 mm x 71 mm
Dimensions Exposed
1050 mm x 565 mm
Coverage
1 tile = 0.593 sqm 1.6 tiles per sqm
Weight
8.10 kg



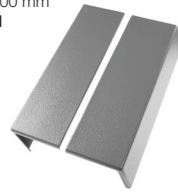
Eclipse Solar Roof Tile

Dimensions Physical
1100 mm x 690 mm x 71 mm
Dimensions Exposed
1050 mm x 565 mm
Coverage
1 tile = 0.593 sqm 1.6 tiles per sqm
Weight
19.56 kg
Photovoltaic Capacity
100 watt peak
Water Capacity
1 litre



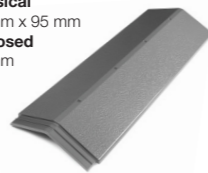
Eclipse Barge Tiles

Dimensions Physical
595 mm x 200 mm x 200 mm
Dimensions Exposed
570 mm x 200 mm
Coverage
1 tile = 0.114 sqm
Weight
3.00 kg



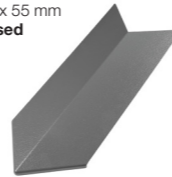
Eclipse Ridge Tile

Dimensions Physical
1100 mm x 395 mm x 95 mm
Dimensions Exposed
1050 mm x 395 mm
Coverage
1 tile = 0.415 sqm
Weight
3.87 kg



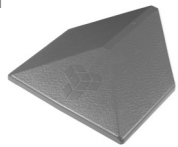
Eclipse Hip Tile

Dimensions Physical
820 mm x 390 mm x 55 mm
Dimensions Exposed
750 mm x 395 mm
Coverage
1 tile = 0.293 sqm
Weight
2.24 kg



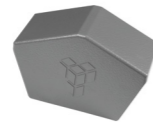
Eclipse Ridge End Cap

Dimensions Physical
467 mm x 410 mm x 100 mm
Dimensions Exposed
280 mm x 410 mm
Coverage
1 tile = 0.115 sqm
Weight
2.20 kg



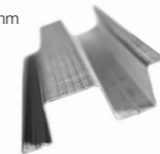
Eclipse Barge End Cap

Dimensions Physical
190 mm x 410 mm x 100 mm
Dimensions Exposed
280 mm x 395 mm
Coverage
1 tile = 0.111 sqm
Weight
2.20 kg



Eclipse Batten

Dimensions Physical
4800 mm x 75 mm x 20 mm
Material Thickness
0.75 mm
Truss Span
600 mm - 900 mm
Weight
0.8 kg per lineal metre



Tractile Eclipse Solar Features & Benefits

High Performance

- outperforms all other roofing products
- produces more electricity per square metre than traditional solar due to cooling the PV modules
- increased R-values

Seamless, Integrated Design

- integrates with Tractile Eclipse Roof tiles
- 4 in 1 combination of roof + insulation + electricity + hot water
- no projections above the roof plane
- hidden interlocking fixing system
- works with all typical roof structures and designs
- all accompanying electrical and plumbing services incorporated within the tile build up height

Integrated Hot Water

- water cools the PV modules increasing performance up to 12% over stand alone solar
- water channels remove heat from roof to be used as required for domestic hot water, pool heating and hydronic floor heating etc
- hot water and pool heating are traditionally the largest consumers of energy

Cyclone Rated

- can withstand Category 5 cyclones
- wind speeds over 280km/h
- maintains water tightness
- fixing hooks are 80% the width of the tile to ensure solid hold
- must be installed as per Tractile guidelines

Sustainable

- low embodied energy
- 8 x more sustainable than concrete and steel roofing products in terms of energy required to manufacture (MJ)
- lower carbon footprint
- 4.5 x more sustainable than concrete and steel roofing products in terms of carbon emissions (Kg of CO2)
- designed considering a complete cradle to cradle lifecycle analysis

Off-grid Living

- reduce or eliminate your electricity bills
- Tractile will save you money
- energy independence
- battery storage options
- electric vehicle compatible
- return on investment

Complete Roof Solution

- Eclipse Solar Thermal Tiles
- Eclipse Tiles
- ridge, hip and barge products to compliment Eclipse Roof
- integrated electricity and hot water generation
- patented Tractile batten fixing system
- naturally insulating materials

Bush Fire BAL-40

- BAL-40 rating as standard
- non-combustible

Multi Award-Winning Product

- designed and developed in Australia
- winner of numerous design awards including Best Design, Sustainability and Product Category
- patented hook fixing batten system
- large format design
- double height
- exceptional strength
- 130mm tile overlap as standard
- 55mm side lock

5-90° Pitch

- optimum range of 10° to 90°
- 5° to 10° possible using silicone in channels
- less than 5° with secondary roof system
- can be used as wall cladding
- most versatile product on the market

Street Appeal

- suits a wide range of Architectural styles, both modern and traditional
- can be installed "in line", half lap, quarter lap, 1/3rd lap, or as required
- adds value to the property
- no unsightly "bolt on" solar panels
- limitless colour options
- sleek 18mm tile edge profile
- new builds and replacement roofs

Hail Resistant

- designed for strength
- withstands 65mm hail stones
- outperforms all other roof materials
- safety in extreme weather events



Tractile

The Designer Solar Roof



www.tractile.com.au

1 300 008 722